



**M3S<sup>®</sup>**

A soil reinforcement  
solution with  
cell geotextiles

**SOL** ∫ **SOLUTION**

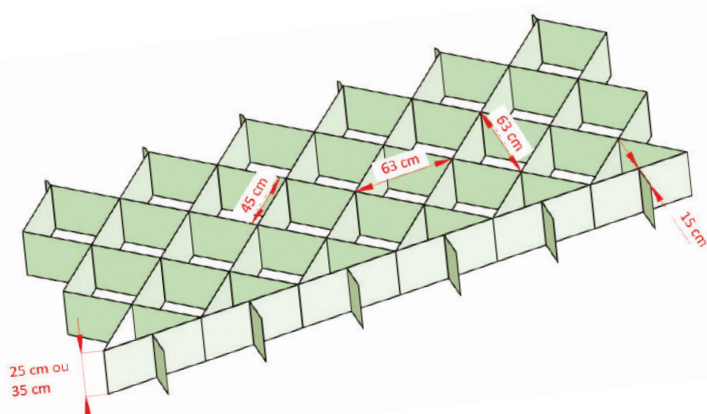
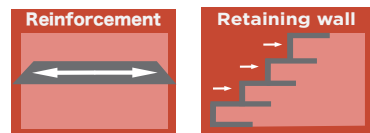
**afitexinov**  
GEOSYNTHETICS

The construction of infrastructure sometimes requires developing or creating slopes. The M3S® solution is used to build stable structures over great heights, such as :

- Retaining walls
- Embankment reinforcement
- Protective barriers
- Noise barriers
- Containment of hazardous products
- Urban developments
- Stiffening of landfill walls

## 1 product installation

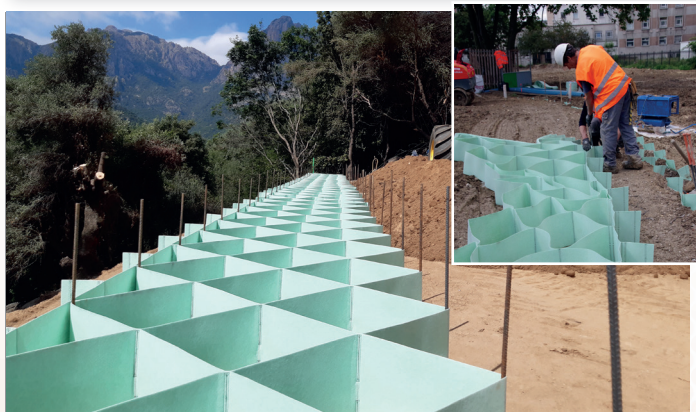
## 2 functions



The M3S® solution consists of a number of geotextile strips stapled together, which make up an alveolar layer. To enhance natural resources, this alveolar layer is used in combination with a filler material which may be any type of soil or compactable aggregates. The reinforcement function is provided by the overlaying of backfilled and compacted alveolar layers.

Adaptable  
to all kinds of  
grounds

### 1. UNFOLDING



### 2. BACKFILLING



### 3. COMPACTION



### 4. STRUCTURE & FACING TYPES



# MULTIPLE FACINGS POSSIBLE

- Vegetalized, mineral or masonry facings
- Tilted and vertical facings
- Various designs (curves, benches...)
- Facilities (railings, stairs...)

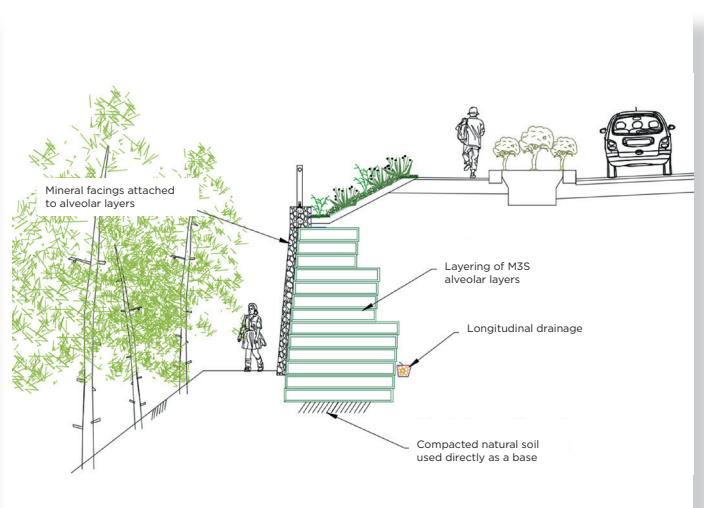
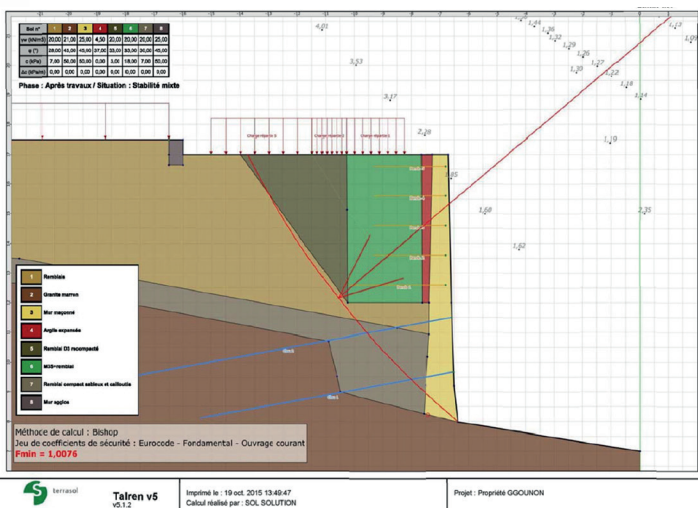


## SOL SOLUTION GUIDES YOU

- Assisted conception
- Supply of alveolar layers
- Supply of facing structures
- G3 geotechnical design survey (NF P94500)



- Installation assistance on site
- Installation control





## M3S® BENEFITS

- Optimal use of natural resources.
- Perfectly suited to all types of terrain, even those with difficult access.
- Adapted to great heights.
- Better integration into the landscape, with a range of aesthetic renderings : plant or mineral-like facing, stone masonry or wood.
- Sloping and vertical facing of various shapes : lines, curves, stands, railings, stairs, etc.
- Easy to install.
- Relatively compact packaging.

## APPLICATIONS

### ENLARGMENTS & RETAINING WALLS



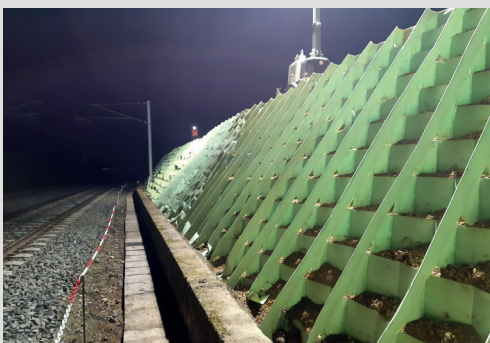
### LANDSCAPING & SPORT COMPLEXE



### DAM & BANK



### RAILWAYS



### LANDFILLS



### CONTAINMENT



**SOL** *S* **SOLUTION**

ZA des Portes de Riom Nord - BP 178  
63204 RIOM cedex - FRANCE  
Tel : 04 73 64 74 84  
contact@sol-solution.com  
www.sol-solution.com

 @Sol Solutions SAS  @solsolution6681

**afitex** *inov*  
G E O S Y N T H E T I C S

13-15 Rue Louis Blériot  
28300 CHAMPHOL - FRANCE  
Tel : 02 37 18 01 51  
afitex@afitex.com  
www.afitexinov.com

 @AFITEXINOV  @afitexinov